



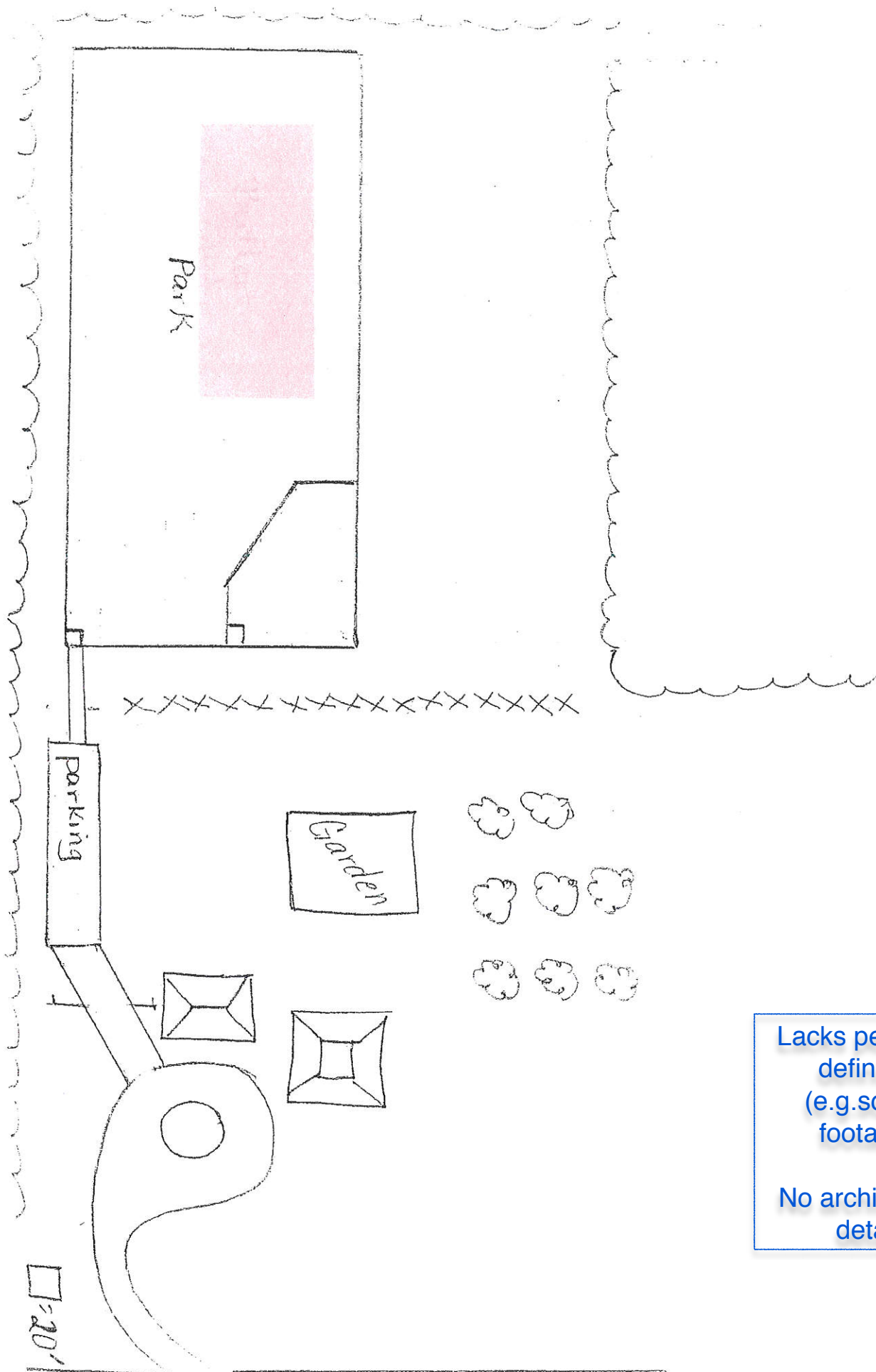
- 29 Acres
- 180 ft. X 300 ft. =54,000 Sq.ft. or 1.23 Acres

DOG PARK AREA - Encompasses up to 1.23 acres.

LARGE DOG AREA - 7,000 sq. ft. +/-

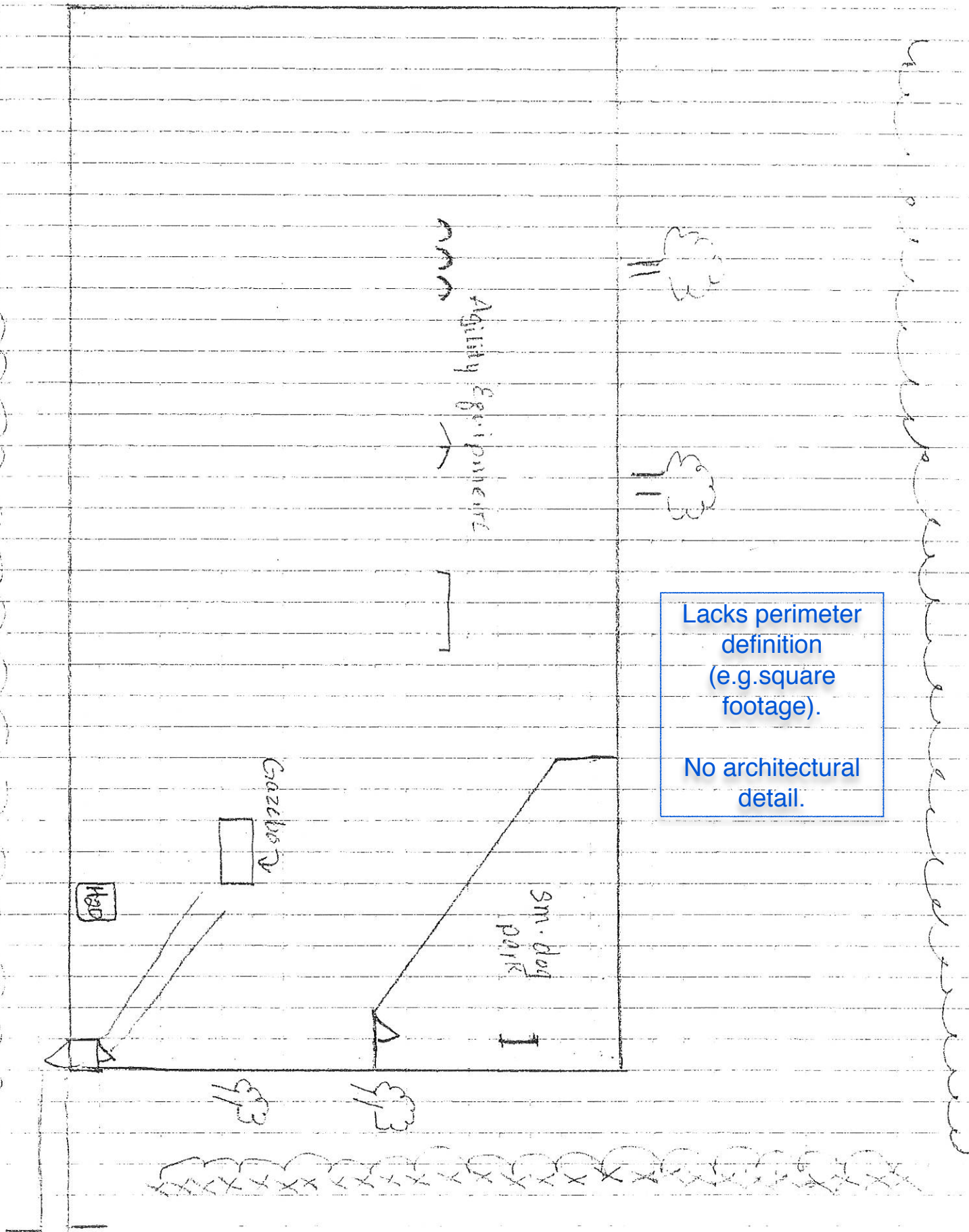
SMALL DOG AREA - 600 sq. ft. +/-

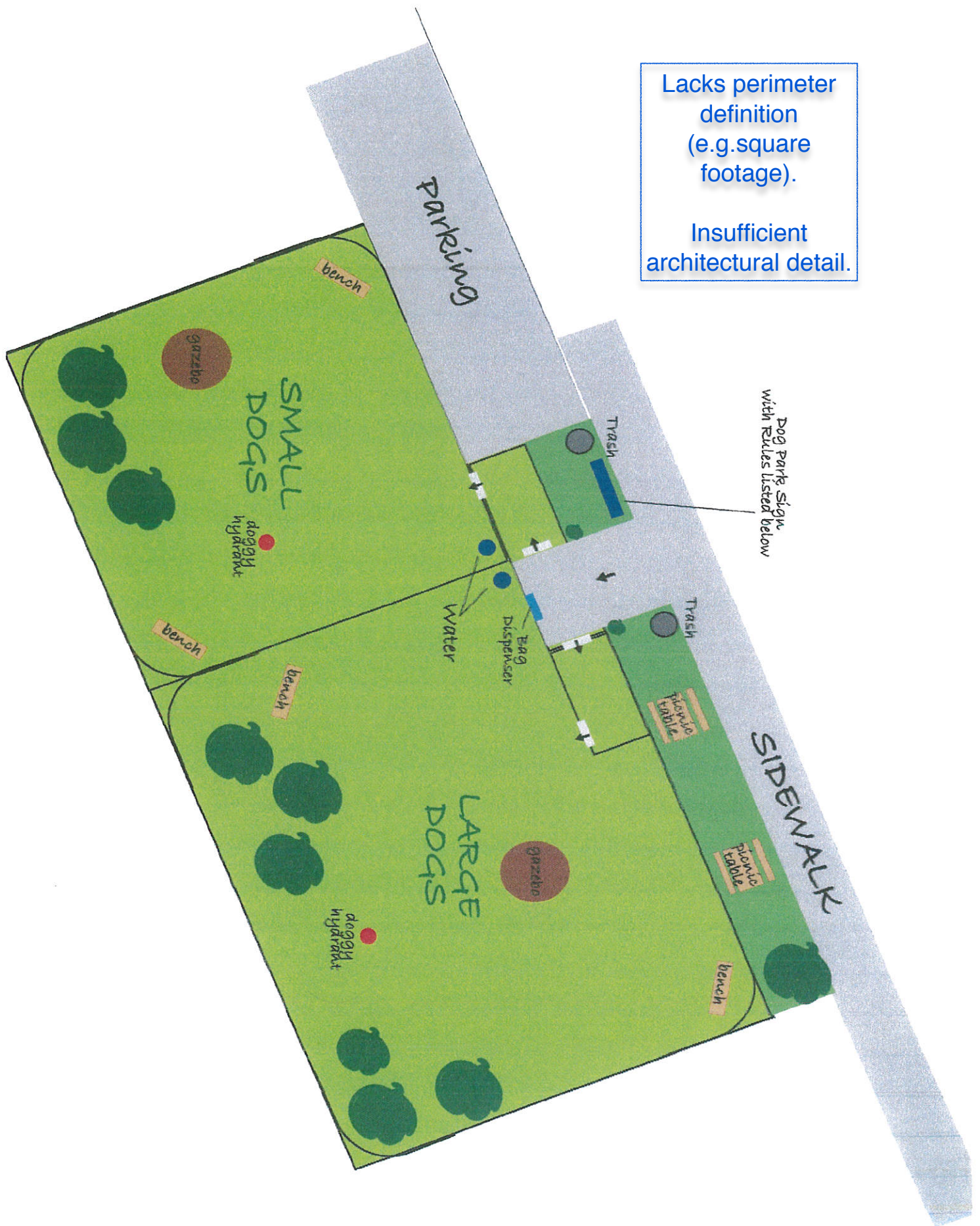
Lacks layout of
dog park within
perimeter fencing
and architectural
detail.



Lacks perimeter
definition
(e.g. square
footage).

No architectural
detail.





Lacks perimeter
definition
(e.g. square
footage).

Insufficient
architectural detail.

Dog Park Sign
with Rules listed below